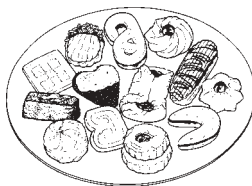


# NonTraditional Student Week Plans

November 3-7, 2003 has been designated as National Nontraditional Student Week this year. Colleges and universities all over the United States will have special programs and activities designed to make people aware of the adult learners on their campuses. MTSU will celebrate with a variety of activities during the week.

**On Tuesday, November 4, the OWLs will sponsor an all-day Faculty and Staff Open House at the Adult Services Center in KUC 320.**



All MTSU faculty and staff are invited to drop by for hot cider and seasonal goodies. They will be able to tour the Adult Services Center and learn about the services provided. As nearly 50% of MTSU's student population can be considered adult learners by virtue of their adult responsibilities, non-traditional students form a vital part of our institution's mission. Learning more about them and the services offered here at MTSU will help faculty and staff serve those whom they encounter in their own jobs.

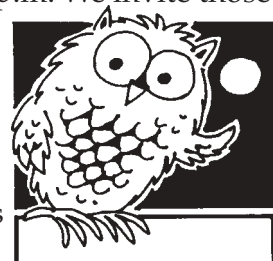
**Wednesday, November 5 will be Nontraditional Student Day in KUC, in front of the Bookstore between 10:00 a.m. and 2:00 p.m.**

There will be an opportunity for all nontraditional students to find out more about the OWLs student organization, to join OWLs, to receive the OWLs pin and an OWLs t-shirt. Plan to come by the OWLs table on November 5 to join in the fun!



**Night Owls Receptions will be held especially for our evening students Monday through Wednesday.** The Adult Services Center

stays open regularly until 6:30 p.m. We invite those enrolled in evening classes to come by KUC 320 before class. Have a cup of hot cider and some seasonal goodies to hold you over until you get home! Learn where the Adult Services Center is located and about the various services offered to adult learners at MTSU.



**Nontraditional Week Dinner will be held on Thursday, November 6 in the Adult Services Center, KUC 320.** Our traditional holiday dinner for nontraditional students always features good food and lots of good conversation. Since it is a potluck meal, all participants bring salads, vegetable dishes, and desserts that will accompany the turkey and ham provided by the OWLs. The initiation for the new Pinnacle honorary members takes place following the dinner. December graduates will also be honored and the Pinnacle Award of Achievement will be presented. The winner of the Non-Traditional Essay Contest will also be announced.



**Essay Contest for Nontraditional Student Week!** One of the ways that we can help faculty, staff and traditional age students understand nontraditional students is to share the experiences of nontraditional students. We are seeking short essays that could be published in campus publications that illustrate the life of nontraditional students for others on the campus. We must receive your essay to the ASC by October 31.

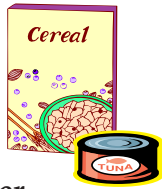
# OWLs Service

Nov. 6 Annual OWLs and Pinnacle Dinner in KUC 320 5:30 - 7:30 p.m. Pinnacle initiation and Awards as well as collection of service project materials.

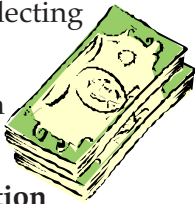


This time of fun and celebration is also the focus for the OWLs service projects for fall semester. This year, we have three projects that we are supporting.

First, as we have the past few years, we are collecting non perishible foods and canned items to give to the local food bank. So we ask you to **bring a can for the food bank to the OWLs/Pinnacle dinner.**



**New this year, we are participating in HOMELAND HELP**, a holiday-season assistance program for our military men and women. We are collecting money that will be used to buy items needed by the 269th Murfreesboro M.P. Unit. **Please bring your cash contribution by the Adult Services Center or to the OWLs/Pinnacle dinner.**



**Santa's Little Raiders is a holiday assistance program for the children of students who live in Family Housing at MTSU.**

Each year we adopt a child and provide clothing, toys and books for that child. This year we have a 2-year old little girl who wants Sponge Bob toys, Dora the Explorer toys, books, coloring books, and a Barbie doll. She also needs clothing, particularly long-sleeved shirts and pants. She wears a 3T and size 10 shoes. If you have clean used clothing in good condition in her size, bring them in. Also you may **contribute money or buy new items yourself and bring them to KUC 320 no later than November 24th so we can wrap them. Thanks for your help!**



# President's Perspective

As President of OWLs, I would like to take this opportunity to welcome all new non-traditional students to MTSU, to inform you about the Older, Wiser Learners, and to encourage you to join our organization. For those of you who have been taking classes for several semesters, I encourage you to become more active in the Adult Services Center and the Older Wiser learners student organization.

We consider any student, regardless of age, who has adult responsibilities outside of their college work, to be a nontraditional student, but we mail this publication to students who are 23 years of age and older, as well as to faculty and administrators on campus.

The active OWLs members congregate at the Adult Services Center, room 320 in the KUC. We share information about professor's attitudes regarding adult students, proof and edit each

other's assignments, and listen to each other vent. We have a great facility here for computer work, lunch, and relaxing in between classes.

We are also a service organization, as you can see by the three projects we have undertaken for fall. I encourage you to donate canned goods for the food bank, contribute cash for the items needed by the Homeland Help project, and to contribute gifts, toys, or clothing to the child we are helping through the Santa's Little Raiders project.

You can contribute to one or more of those service projects at our big Nontraditional Student Week dinner. It's a great time to meet other adult students on campus, bring your family with you to see where you disappear each day, and celebrate the academic achievements of the nontraditional students at MTSU. I encourage you to attend.

*Dennis Jungman, OWLs President*

## Scholarships Awarded Through OWLs

We award **ten OWLs Academic Service Scholarships** each year. They pay \$1,000 per semester and require five hours per week of work on campus, plus they are renewable for up to eight semesters if you maintain a 2.5 semester GPA and a 2.9 cumulative GPA .

We also have **two Enrichment Scholarships** for one year only. They are available for students with a 2.5 -2.9 GPA.

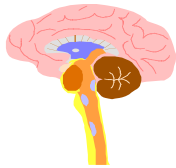
There are also two privately-endowed scholarships for seniors who are women in transition or seniors who are majoring in elementary education. They require a 2.9 GPA or better.

If you qualify for any of these scholarships, you will want to join OWLs so that you can apply for them. Scholarship applications are taken in January for the 2004-2005 year.



# Reach for the Pinnacle

## Student Success Workshops



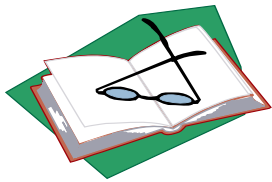
### Using your Whole Brain

Wed. Nov. 12     12:30 - 1:00 or 1:30 - 2:00  
Thurs. Nov. 13     3:30- 4:00 or 5:30-6:00



### Improving your Memory

Wed. Nov. 19     12:30 - 1:00 or 1:30 - 2:00  
Thurs. Nov. 20     3:30- 4:00 or 5:30-6:00



### Five-Day Study Plan

Wed. Dec. 3     12:30 - 1:00 or 1:30 - 2:00  
Thurs. Dec. 4     3:30- 4:00 or 5:30-6:00

Call 898-5989 to sign up for any of these events.

## Pinnacle Award of Achievement

One Pinnacle member graduating in December will be the recipient of the Pinnacle Award of Achievement. Sherry Scott and Marcee Burnett received these awards in May.

We seek to honor those who have achieved academic success despite many obstacles that they encountered and overcame during their academic careers. **Apply for this award in KUC 320 or online at <http://www.mtsu.edu/~owls/pinn.htm>.**

## Join Pinnacle Honorary

If you are a Junior or Senior with a 3.0 GPA, you are eligible for membership in Pinnacle, the honorary for non-traditional students. Graduate students with a 3.4 GPA may also join this honorary.

You should have received an e-mail invitation to join. The deadline for applying is October 31. **You may apply on-line. Just go to <http://www.mtsu.edu/~owls/pinn.htm>.** Call us at 898-5989 if you have questions.

## OWLS Awards

At the end of each spring semester during our annual picnic, the OWLS present awards to people who are exemplary in their support and and those who are examples for all OWLS members. In 2003, they were:

**The Best OWL Professor went to Dr. Margaret Fontanesi-Seime, Associate Professor, Social Work.** Other professors nominated for this award included: Dr. Jeffrey Powell, *Math*, Sherry Rogers, *BMOM*, and Dr. Jane Williams, *Educational Leadership*.

**The Best OWL Spouse was Jerry Hilland, husband of Crystal Hash.** Crystal also awarded her father, **Timmy Muncey** with the **Best OWL Father** award.

**The Best OWL Son, went to Brandon Jordan,** Jacki Jordan's 8 year old son who maintains a good attitude while his dad finishes his degree.

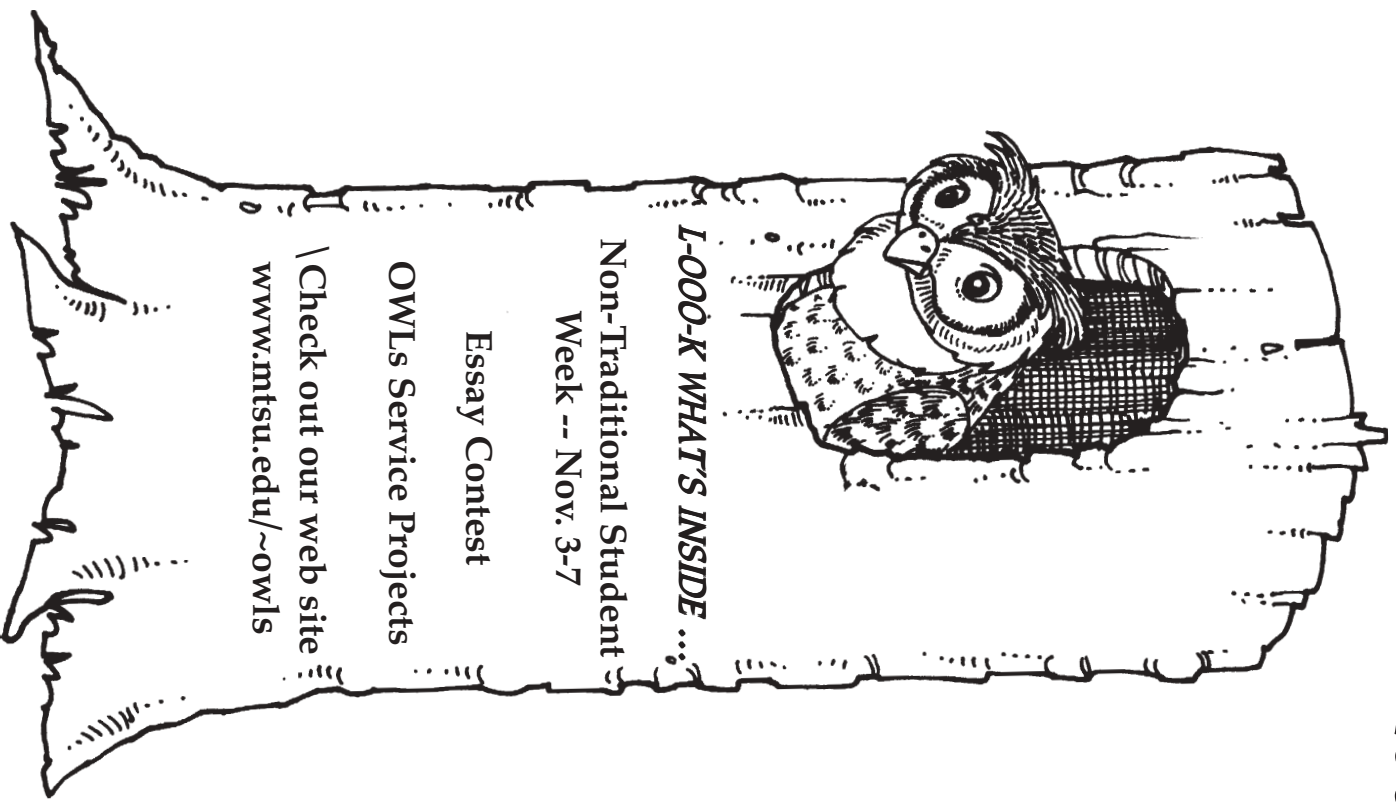
**The Best OWL Family went to Joey South and Annette South,** the husband and mother-in-law of Julie South. Annette takes care of the boys until their father can pick them up while mom is in school.

**The Best OWL Friend was awarded to Joseph A. Morre,** roommate of Charles A. Roberson, for doing household tasks and running errands, making life more simple for Charles.

**The Best Juggling OWLS** went to two members for the first time. **Jacki Jordan** was nominated by her husband and **Thomas Franklin** by his wife.

**Best OWL Employer was given to Dr. David Whitaker,** for whom Marcee Burnett has worked as secretary for ten years. He encouraged her to pursue her college degree and succeed in her dreams.

# OWLS' Outlook – Fall 2003



L-000-K WHAT'S INSIDE ...

Non-Traditional Student  
Week -- Nov. 3-7

Essay Contest

OWLs Service Projects

Check out our web site  
[www.mtsu.edu/~owls](http://www.mtsu.edu/~owls)

## OWLS' Outlook

A Publication of the Adult Services Center  
Middle Tennessee State University  
P.O. Box 646  
Murfreesboro, TN 37132  
2-50700