

OWLs' Outlook

Vol. XI No. 1

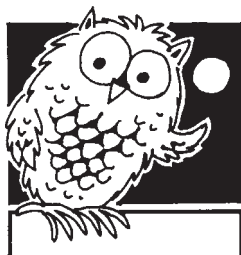
Fall 2005

Nontraditional Student Week Plans

November 7-11, 2005, has been designated as National Nontraditional Student Week this year. Colleges and universities all over the United States will have special programs and activities designed to make people aware of adult learners on their campuses. MTSU will celebrate with a variety of activities during the week.

Essay Contest for Nontraditional Student Week! One of the ways that we can help faculty and staff and traditional-aged students understand nontraditional students is to share the experiences of nontraditional students. We are seeking short essays that could be published in campus publications that illustrate the life of nontraditional students for others on the campus. E-mail your essay to owls@mtsu.edu by October 28.

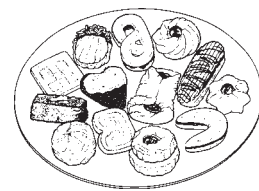
We will host Night Owls Receptions especially for our evening students Monday through Wednesday. The Adult Services Center stays open until 6:30 p.m. We invite those enrolled in evening classes to come by KUC 320 before class. Have a cup of hot cider and some seasonal goodies to hold you over until you get home! Learn where the Adult Services Center is located and about the various services offered at MTSU.



On Tuesday, November 8, the OWLs will sponsor an all-day Faculty and Staff Open House at the Adult Services Center in KUC 320. All MTSU faculty and staff are invited to drop by for hot cider and seasonal goodies. A tour of the Adult Services Center is an easy way to learn about services provided. Since adult learners total nearly 50 percent of our students, learning more about nontraditional students and the services

offered here at MTSU will help faculty and staff better serve those whom they encounter in their own jobs.

Wednesday, November 9, will be Nontraditional Student Day in KUC, in front of the Bookstore between 10:30 a.m. and 2:30 p.m. There will be an opportunity for all nontraditional students to find out more about the OWLs student organization, to join OWLs, and to receive the OWLs pin and an OWLs t-shirt. Plan to come by the OWLs table on November 9 to pick up your gift and to help celebrate nontraditional students!



Nontraditional Week Dinner will be held on Thursday, November 10, in the Adult Services Center, KUC 320. Our traditional holiday dinner for nontraditional students and their families always features good food and lots of good conversation. Since it is a potluck meal, all participants should bring salads, vegetable dishes, and desserts that will accompany the turkey and ham provided by the OWLs.



The initiation for the new Pinnacle honorary members takes place following the dinner. December graduates will also be honored and the Pinnacle Award of Achievement will be presented. We will also announce the winner of the Non-traditional Essay Contest.

This celebration also provides an opportunity to collect canned goods for charity. **We encourage you to bring canned goods to KUC 320 when you come for Nontraditional Student Week activities.**

Dr. Carol Ann Baily, Director

Fall Events

Oct. 28 – Deadline for Pinnacle Applications and the Nontraditional Student Week Essay Contest.



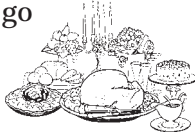
Nov. 7–9 – Nontraditional Student Week Evening Open House 4:30–6:30 p.m. in KUC 320.



Nov. 9 – Nontraditional Student Day–10:30 a.m.–2:30 p.m.–Join us for the celebration of nontraditional students in front of Phillips Bookstore in KUC. **Come by to get your NonTrad Week gift.**



Nov. 10 – Annual OWLs and Pinnacle Dinner in KUC 320 5:30–7:30 p.m. Bring your favorite dish to serve 8–10 to go along with the ham and turkey provided by OWLs.



Pinnacle initiation and awards will be announced as well as the Nontraditional Student Week Essay Contest Winner.

Don't forget to bring canned goods for our fall service project anytime during Nontraditional Student Week.



Nov. 21 – Santa's Little Raiders Each year we adopt a child and provide clothing, toys, and books for that child through the Santa's Little Raiders program. You may **contribute money or buy new items and bring them to KUC 320 no later than Nov. 21.**



Dec. 5 – Childcare Survey Due If you have children 14 or under, please respond to the online survey on childcare.

President's Perspective

MTSU's Older Wiser Learners (OWLs) welcome our nontraditional family back to school for yet another Fall semester!

The Adult Services Center, also known as the OWLs office, located in KUC room 320, provides older students with a warm, adult atmosphere. The center is equipped with kitchenette, computers, fax, and phone, as well as our high standards of advocacy and support. We strongly encourage all students who consider themselves to be nontraditional students to come by our office and explore our valuable resources, as well as meet our students and staff.

Our office offers support to any student, regardless of age, who juggles outside adult responsibilities that often complicate their college journeys. Since we realize how difficult college can be, especially for those of us who are returning after years of being out of school, we are eager to share our experiences and to extend our guidance to ease your path through these pivotal years.

Childcare concerns many adult students at MTSU. We are happy to announce that the MTSU Childcare Consortium now can

provide care for infants, toddlers, and pre-school children either during the day or for evening classes through our partnership with Kids R Kids on Rutherford Blvd. They also can provide school holiday care for your school-aged children when arranged in advance. Contact the office for details—898-5989.

National Nontraditional Student Week is November 7–10. Our annual holiday potluck dinner on Thursday, Nov. 10, is an ideal opportunity for you to mingle with other adult students. So, bring your family and introduce them to your new college family. Along with your family's side dish to go with the turkey and ham, we ask that you remember to bring some canned goods and other non-perishable food items for the local food bank.

We also collect money and/or presents each year for a child of a student living in campus Family Housing. If you can contribute to make a better Christmas for this child, come by KUC 320 to see what our Santa's Little Raider wants and what sizes he or she needs. We greatly appreciate your support of our service projects.

Julie Hancock, OWLs President

Scholarships Awarded Through OWLs

We award **ten OWLs Academic Service Scholarships** each year, which pay \$1,300 per semester and require five hours per week of work on campus. The scholarships are renewable for up to six semesters if you maintain a 2.5 semester GPA and a 2.9 cumulative GPA.

We also have **two Enrichment Scholarships** for one year only. They are available for students with a 2.5–2.9 GPA.

There are also two privately-endowed scholarships for seniors who are women in transition or seniors who are majoring in elementary education. They require a 2.9 GPA or better.

If you qualify for any of these scholarships, you will want to join OWLs so that you can apply for them. Scholarship applications will be taken in January for the 2006–2007 year.



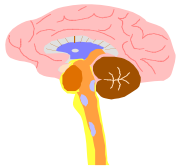
Reach for the Pinnacle

Student Success Workshops



5 Steps to a College Paper

Tues., Oct. 25 5:00–5:30 p.m.
Wed., Oct. 26 1:00–1:30 p.m.



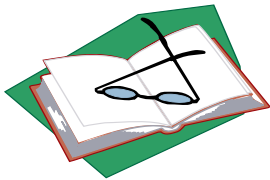
Using your Whole Brain

Tues., Nov. 1 5:00–5:30 p.m.
Wed., Nov. 2 1:00–1:30 p.m.



Improving your Memory

Tues., Nov. 15 5:00–5:30 p.m.
Wed., Nov. 16 1:00–1:30 p.m.



Five-Day Study Plan

Tues., Nov. 29 5:00–5:30 p.m.
Wed., Nov. 30 1:00–1:30 p.m.

Call 898-5989 to sign up for any of these events.

Pinnacle Award of Achievement

One Pinnacle member graduating in December will be the recipient of the Pinnacle Award of Achievement.

We seek to honor those who have achieved academic success despite many obstacles that they encountered and overcame during their academic careers. **Apply for this award in KUC 320 or online at www.mtsu.edu/~owls/pinn.htm.**

Join Pinnacle Honorary

If you are a junior or senior with a 3.0 GPA, you are eligible for membership in Pinnacle, the honorary for nontraditional students. Graduate students with 3.4 GPAs may also join this honorary.

You should have received an e-mail invitation to join. The deadline for applying is October 28. **You may apply online. Just go to www.mtsu.edu/~owls/pinn.htm.** Call us at 898-5989 if you have questions.

OWLs Awards

At the end of each Spring semester during our annual picnic, the OWLs present awards to people who are notable for their support and those who are examples for all OWLs members. In 2005, they were:

The Best OWL Professor went to Dr. Tammy J. Melton, professor of Chemistry. Dr. James Beavers, assistant professor of Recording Industry, was also nominated for this award.

The Best OWL Husband was **Ken Stewart**, husband of Charlene Stewart, and **Best OWL Wife** went to **Mary Beth Ryan**.

The Best OWL Daughters, was presented to **Cassie, Catie**, and **Courtney Kopp**, daughters of Calley Stroud. **The Best OWL Son** went to **Jesse Percy**, son of Lisa Percy.

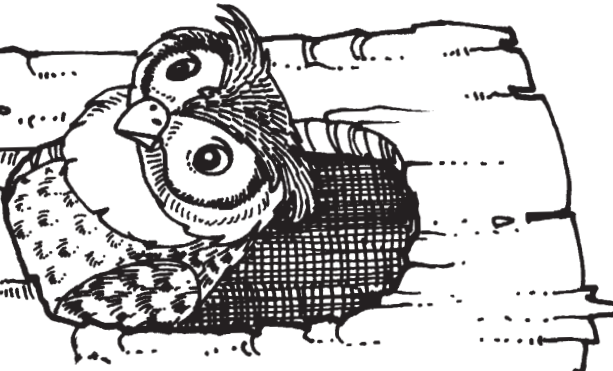
The Best OWL Friend was awarded to **Karen Dunkley**, secretary in the Geosciences Department for being helpful and a deserving friend to those who nominated her.

The Best Juggling OWL went to **Christy Farr Ferrelli** who balanced her children as a single parent, then remarried, and began to raise their blended family together, all while completing her degree at MTSU.

Best OWL Volunteer this year was given to **David DeLeon** who, in addition to his scholarship hours worked in the Adult Services Center, was always enthusiastic and willing to help out around the office, delivering things across campus, and general toting.

Calley Stroud was presented an award for her service as **OWLs President 2004–2005** and **Kelly Mangino** was given the **Pinnacle Award of Achievement** for Spring 2005.

OWLS' Outlook – Fall 2005



L-000-K WHAT'S INSIDE ...

Nontraditional Student
Week -- Nov. 7-10

Essay Contest
OWLS Service Projects

Invitation to Join the
Pinnacle Honor Society

Information on
OWLS Scholarships
www.mtsu.edu/~owls

**MIDDLE
TENNESSEE**
STATE UNIVERSITY

OWLS' Outlook

A Publication of the Adult Services Center
Middle Tennessee State University
P.O. Box 646
Murfreesboro, TN 37132
2-50700

SA034-1005

A Tennessee Board of Regents University

MTSU is an equal opportunity, non-racially identifiable, educational

institution that does not discriminate against individuals with disabilities.