



OWLs Outlook

Vol. XII No. 1

Middle Tennessee State University

Fall 2006

Nontraditional Student Week Activities

November 6–10 is designated National Nontraditional Student Week this year. Colleges and universities all over the United States will have special programs and activities designed to make people aware of the adult learners on their campuses. MTSU will celebrate with a variety of activities during the week.

Enter the Nontraditional Student Week Essay Contest! One of the ways we can help faculty, staff, and traditional-age students understand nontraditional students is to share our experiences. We are seeking a winning essay of no more than 500 words to be published in *The Record*, where it will provide a glimpse of college life as experienced by nontraditional students for others at MTSU. E-mail your essay to owls@mtsu.edu by November 3.

We will host Night Owls Receptions especially for our evening students Monday through Wednesday. The Adult Services Center stays open regularly until 6:30 p.m. We invite those enrolled in evening classes to come by KUC 320 before class. Have a cup of hot cider and some seasonal goodies to hold you over until you get home! Learn where the Adult Services Center is located and about the various services offered at MTSU. **Pick up your special nontraditional student gift!**

On Tuesday, November 7, the OWLs will sponsor an all-day Faculty and Staff Open House at the Adult Services Center in KUC 320. All MTSU faculty and staff members are invited to drop by for hot cider and seasonal goodies. They will be able to tour the Adult Services Center and learn about the services provided. Since adult learners make up nearly 50 percent of MTSU's student population, learning more about nontraditional students and the services offered at MTSU can help faculty and staff better serve the adult learners they encounter in their own jobs.

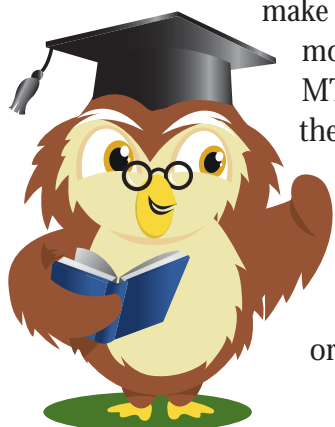
Wednesday, November 8, will be Nontraditional Student Day in KUC, in front of Phillips Bookstore between 10:00 a.m. and 3:00 p.m. There will be an opportunity for all non-traditional students to find out more about the OWLs student organization, to join

Activities cont. on page 2



In this Issue

- Nontraditional Student Week Activities
- Fall Events
- Scholarship through OWLs
- President's Perspective
- Pinnacle Honor Society
- Pinnacle Award of Achievement
- OWL Awards
- Student Success Workshops



2

Fall Events

October 27 is the deadline for Pinnacle Honor Society membership for fall semester and the deadline to apply for the Pinnacle Award of Achievement for those graduating in December. For more, go online to <http://mtsu.edu/~owls/pinn.htm>.

November 3 is the deadline for the Nontraditional Student Week Essay contest. Submit a Word document of 500 words or less to owls@mtsu.edu.

November 6–8 is Open House for Night Owls. Come by KUC 320 from 4:00 to 6:00 p.m. for hot cider, goodies, and your special gift.

November 8 is Nontraditional Student Day. Come by the table in front of the Grill from 10:00 a.m. to 3:00 p.m. for your special gift and to find out more about our Older Wiser Learners student organization.

November 9 is the evening of the annual Nontraditional Student Week Potluck Dinner in KUC 320 and 322 from 5:30 to 7:30 p.m. Bring your favorite dish to serve 8–10 and your favorite family beverage to go along with the turkey and ham provided by OWLs. Pinnacle initiation and awards will be announced, as well as the Nontraditional Student Week Essay Contest Winner. Call 898-5989 with the number in your family who will attend by Nov. 7 so we will have enough meat for everyone.

Don't forget to bring canned goods for our fall service project anytime during Nontraditional Student Week.

November 21 is the drop off date for our Santa's Little Raiders effort. Each year we adopt a child and provide clothing, toys, and books through the Santa's Little Raiders program. You may **contribute money or buy new items and bring them to KUC 320.**

Scholarships through OWLS

An OWLs member with a 2.9 GPA may apply for **one of ten OWLs Academic Service Scholarships** each year. They pay \$1,300 per semester and require five hours per week of work on campus. They are renewable for up to six semesters if you maintain a 2.5 semester GPA and a 2.9 cumulative GPA.

We also have **two Enrichment Scholarships** for one year only. They are available for students with GPAs between 2.5 and 2.9.

There are also two privately endowed scholarships for seniors who are women in transition or seniors who are majoring in elementary education. They require a 2.9 GPA or better.

If you qualify for any of these scholarships, you will want to join OWLs so that you can apply for them. Scholarship applications will be taken in January for the 2007–2008 year. You can find the scholarship page on our Web site at <http://mtsu.edu/~owls/scholar.htm>.

Activities cont. from page 1

OWLs, and to receive the OWLs pin and an OWLs t-shirt. **Plan to come by the OWLs table on November 8 to pick up your special non-traditional student gift and to help celebrate nontraditional students!**

The Nontraditional Week Dinner will be held on Thursday, November 9, 5:30–7:30, in the Adult Services Center, KUC 320. Our traditional holiday dinner for nontraditional students and their families always features good food and lots of good conversation. Since it is a potluck meal, all participants should bring salads, vegetable dishes, and desserts that will accompany the turkey and ham provided by the OWLs. Initiation for new Pinnacle Honor Society members follows the dinner. December graduates will also be honored and the Pinnacle Award of Achievement will be presented. We will also announce the winner of the Nontraditional Week Essay Contest.

We use this opportunity to collect canned goods for charity during nontraditional student week. **We encourage you to bring canned goods to KUC 320 when you visit during Nontraditional Student Week.**



–Dr. Carol Ann Baily, director

President's Perspective

MTSU's Older Wiser Learners (OWLs) would like to welcome our nontraditional family back to school for yet another fall semester!

The Adult Services Center, also known as the OWLs office, located in KUC 320, provides older students with a warm, adult atmosphere. The center is equipped with a kitchenette, computers, fax, and phone. We have high standards of advocacy and support, and we strongly encourage all who consider themselves to be nontraditional students to come by our office and explore our valuable resources and meet our students and staff.

Our office offers support to any student, regardless of age, who juggles outside adult responsibilities that often complicate their college journeys. Since we realize how difficult college can be, especially for those of us who are returning after years of being out of school, we are eager to share our experiences and extend our guidance to smooth your path through these pivotal years.

Childcare is a concern for many adult students at MTSU. We are happy to announce that the MTSU Childcare Consortium can provide care for infants, toddlers, and preschool children during the day through our partnership with Kids R Kids on Rutherford Boulevard.



The consortium can also provide school holiday care for your school-aged children when arranged in advance. Contact the office for details at 898-5989 or visit the Web page at <http://mtsu.edu/~owls/handbook/child.htm>.

National Nontraditional Student Week is November 6–10. Our annual potluck dinner on Thursday, November 9, is an ideal opportunity for you to mingle with other adult students. So bring your family and introduce them to your new college family. Along with your family's side dish and drink to go with the turkey and ham, we ask that you remember to bring some canned goods and other nonperishable food items for the local food bank.

We also collect money and/or presents each year for a child of a student living on campus in Family Housing. If you can contribute to make a better Christmas for this child, come by KUC 320 to see what our Santa's Little Raider wants and what sizes he or she needs. We greatly appreciate your support of our service projects.

–Julie Hancock, OWLs president

Join the Pinnacle Honor Society

If you are a junior or senior with a 3.0 GPA, you are eligible for membership in Pinnacle, the honor society for nontraditional students. Graduate students with 3.4 GPAs may also. You should have received an e-mail invitation to join. The deadline for applying is October 27. **You may apply online at <http://mtsu.edu/~owls/pinnform.htm>.** Call us at 898-5989 if you have questions.

Pinnacle Award of Achievement

One Pinnacle member graduating in December will receive the Pinnacle Award of Achievement. We seek to honor those who have achieved academic success despite many obstacles encountered and overcome during their academic careers. **Apply for this award in KUC 320 or online at <http://mtsu.edu/~owls/pinnapp.htm>.** The deadline is October 27.



OWLs Awards



At the end of each spring semester during our annual picnic, the OWLs present awards to people who are notable for their support and those who are examples for all OWLs members. Here are the OWLs Award winners for 2006.

The **Best OWL Professor** is **Meredith Ann Higgs**, assistant professor, Academic Enrichment. Others nominated for this award included Mary Farone, assistant professor, Biology, and Linda Wilson, professor, Nursing.

The **Best OWL Husband** is **Richard Denney**, who was nominated by his wife, Monique, for helping with their five children and being her personal math tutor while being a full-time student himself with a 3.0 GPA.

The **Best OWL Children** are Matthew, Sabrina, Austin, Ashleigh, and Emily McDonald, the five children of Cathy McDonald, who nominated them as a group because they help around the house and cook dinners and look after each other while their mom studies.

The **Best OWL Son** is **Caleb Proctor**, Terri Proctor's 15-year-old, who has gone way beyond his normal support for his mom.

The **Best OWL Daughter** is **Amiee Stinson**, a student at MTSU and majoring in Social Work, as is her mom, Sherri. Amiee works full time, takes a full load of classes, and makes time on campus to see her mother, who is proud to call Amiee her daughter and friend.

The **Best OWL Family** is **Derrell and Debbie Castleberry**. They were nominated by Evadine Brownlee because they both attend school full time and work part time and they have two children, yet are still available to extend a hug to a friend in need.

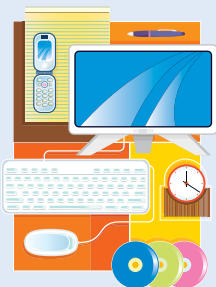
The **Best OWL Friend** is **Lela Cathey**, nominated by Aimee Gholson for her total support and encouragement and the way she helps out with things that Aimee doesn't even think she needs. She listens to her vent—she is a true friend.

The **Best Juggling OWL** is **Tommy Sands**, nominated by his wife, Dawn. He works two jobs (about 70 hours a week), visits nursing homes to talk to elders who never get visits, and volunteers for Special Olympics and for work with veterans. He has a 3.55 GPA in graduate school and is the copresident of the Graduate Students Association. He still finds time for his family and seven grandkids.

The **2006 Pinnacle Award of Achievement** for 2006 was presented to **Amanda Cook**, who returned to MTSU in 2003 and overcame an F in chemistry received when she was in college the first time. This time she made an A, and she even decided to make chemistry her minor!

Student Success Workshops

Wednesdays 12:40–1:30 OR Thursdays 1:00–1:50 p.m.



Five Steps to a College Paper

Wed., Oct. 25, or
Thurs., Oct. 26



Using Your Whole Brain

Wed., Nov. 1, or
Thurs., Nov. 2



Five-Day Study Plan

Wed., Nov. 15, or
Thurs., Nov. 16