

OWLS' Outlook

Vol. IX No. 2

Spring 2004

Shining a Light on Adult Learners



On February 19–20, Middle Tennessee State University will once again host a conference for adult learners and those who work with them on campuses throughout the state of Tennessee. The theme this year will focus on how to help students learn about their own

strengths, their gifts, and their capabilities by shining a light on those facets of their personalities when we meet with them. We often see what they cannot see for themselves. We can serve as a lighthouse to guide the direction of our students toward their goals.

Cara DiMarco, a counselor in the Women's Center at Lane Community College in Eugene, Oregon, and a college instructor and private counselor, will be our keynote speaker presenting "Shining a Light on Adult Learners." She will lead us in an exploration of how we can climb the tower of our internal lighthouse and utilize practical models to shine a steady and supportive light on adult learners as they move toward achieving their goals and creating a beautifully thriving future. She believes that we have limitless opportunities to shine a light and provide an anchoring and encouraging vision to these students. By offering our clarity, curiosity, wonder, and delight, we can affirm and celebrate who they are at this moment as well as our belief in all that they can become.

Students Encouraged to Attend the Conference. We have planned a series of break-out sessions specifically targeted at adult students. We have a discounted conference fee for students. Some conference fee waivers are also available for students. Contact the Adult Services Center at 615-898-5989 for details.

Faculty/Administrators Conference Registration. We must receive your registration form and check

for the conference fee no later than **February 6, 2004**, to confirm food and other arrangements and to be able to send you the detailed schedule, directions, and parking instructions. **You may fill out the registration form on our Web site** and then bring the check with you to registration.

Need more information? Call 615-898-5989 or e-mail us at owls@mtsu.edu. Check out our Web site at www.mtsu.edu/~owls/conference. You can register online!

Conference Schedule

Thursday, February 19, 2004

10:45 a.m.–Noon Registration in JUB Lobby
Noon–2:00 p.m. Keynote Luncheon, Hazlewood Dining Room, Dr. Cara DiMarco, keynote speaker, "Shining A Light on Adult Learners"

2:15 p.m.–3:15 p.m. Concurrent Sessions
P-1/S-1 "Connecting Head and Heart: Finding Your Passions," Dr. Catherine Crooks, associate professor, Psychology, Middle Tennessee State University

3:30 p.m.–4:30 p.m. Concurrent Sessions 2
P-2 "Helping Your Students Find the Mr. or Ms. Universe Inside of Them," Fran Henslee, instructor, and Meredith Anne Higgs, assistant professor, Developmental Mathematics, Middle Tennessee State University
S-2 "Nurturing Resilience in Yourself and Other Students," Dr. Carol Ann Baily, Adult Services Center, Middle Tennessee State University

Friday, February 20, 2004

8:00 a.m.–9:00 a.m. Concurrent Sessions 3
P-3 "Teaching 'Go For It!' Techniques," Kate Jacobs, Tennessee Technology Center, Shelbyville
S-3 "Finding the Mr. and Ms. Universe Inside of You!" Meredith Anne Higgs, assistant professor, Developmental Mathematics, Middle Tennessee State University
9:15 a.m.–10:15 a.m. Concurrent Sessions 4
P-4 "Multiple Intelligences: Helping Adult Learners Develop Strategies for Learning," Dr. Carolyn Hopper, Learning Strategies Coordinator, MTSU
S-4 "Shining the Light On Yourself," Cele Curtis, coordinator, Adult Services, Cleveland State Community College
10:30 a.m.–11:30 a.m. Concluding Brunch
Hazlewood Dining Room, JUB

OWLS ACTIVITIES

April 15—Nominations for OWLs Awards due



The OWLs organization gives out awards each spring semester to the Best OWL Professor, the Best OWL Spouse, the Best OWL Son or Daughter, the Best OWL Family, and the Best OWL Friend. We also present an award to the Best Juggling OWL and the Best OWL Volunteer Award. You may pick up a nomination form in the Adult Services Center in KUC 320 or use the online form available at <http://www.mtsu.edu/~owls/owlnom.htm>

April 15—Deadline to join the Pinnacle Honor Society



All juniors and above with a 3.0 GPA or graduate students with 3.4 GPA are eligible to join. Fill out an application online at mtsu.edu/~owls and then click on Pinnacle in the list on the left or come by KUC 320 to pick up an application.

May 13—Annual OWLs Picnic 5:30 - 7:30 p.m. Old Fort Park Pavilion



This is a fun time for family and friends. We have a potluck picnic in the park to close out the school year! Bring a dish to serve 8–10 of salad, veggies, or side dishes to go with barbeque, plus a liter bottle of your favorite soft drink. We provide the barbeque and all the paper products we need. We will also give out the OWLs awards and have the Pinnacle Honor Society initiation.

PRESIDENT'S PERSPECTIVE

As president of OWLs, I want to personally welcome everyone back from the holiday season, and I hope that you are looking forward to an exciting semester.

I would also like to remind everyone to fill out the **Course Evaluation Forms** for the Fall 2003 semester. These forms are kept in a binder so that anyone interested can review the professors and their courses before registering for a class. Other reviews on the Web may not reflect the thoughtful evaluation by adult learners. Let's get our book updated so we can help out all of our members.

I want to send out a big THANK YOU to all those who helped to make the November dinner a great success and for the donations to the food drive, Project Homeland Help, and our adopted Little Raider. We made her Christmas a happy one. Again, THANK YOU and I greatly appreciate all the support.

The Annual OWLs and Pinnacle Picnic will be on May 13. I hope that many of you will plan to attend because I would like to see a big turnout and make this the biggest one to date. All members are invited along with spouses,

children, parents, and significant others. We have a potluck and the Pinnacle Honor Society will initiate new members and present their Award of Achievement. The OWLs organization will present the annual OWLs awards and this event is always interesting to watch.

I want to encourage everyone to send in nominations for the OWLs Awards. You can do this in person at the Adult Services Center or online. Please read the award descriptions on page 3 and turn in your nominations by April 15.

We are thinking about a canoe trip this year and need your input. Please let me know what you think. Also, visit our Web site at www.mtsu.edu/~owls for all the latest information.

I look forward to meeting everyone so please stop by and visit us. We are located in KUC 320. The Adult Services Center is open Monday through Thursday 7:30 a.m. to 6:30 p.m. and Friday from 7:30 a.m. to 4:30 p.m.

Dennis Jungman, OWLs President



Scholarships Awarded through OWLs

We award **ten OWLs Academic Service Scholarships** each year. They pay \$1,300 per semester, require five hours per week of work on campus, and are renewable if the GPA remains over 2.9. These scholarships for 2004–2005 will go to Barbara Donnell, Tony Ford, Mary Lou Goins, John Jackson, Keyne Mitchel, Lisa Percy, Scott Peterson, Lindsay Reeves, Evelyn Stewart, and Tobi Williams.

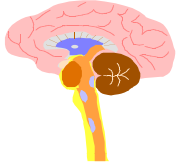
We also have **two Enrichment Scholarships** for one year only. The recipients for 2004–2005 are Keith Sosebee and Frank Walkup.

The **Jane Nickell Taylor Scholarship** was awarded to Elizabeth Shreve and the **Joan Nickell Bailey Scholarship** was granted to Loralyn Hollon.



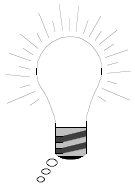
Reach for the Pinnacle

Student Success Workshops



Using Your Whole Brain

Wed. Feb 4 or April 7 12:30–1:00 or 1:30–2:00
Thurs. Feb. 5 or April 8 3:30–4:00 or 5:00–5:30



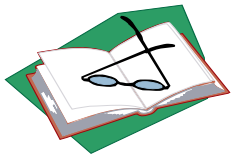
Improving Your Memory

Wed. Feb. 11 or April 14 12:30–1:00 or 1:30–2:00
Thurs. Feb. 12 or April 15 3:30–4:00 or 5:00–5:30



Five Steps to a College Paper

Wed. Mar. 10 12:30–1:00 or 1:30–2:00
Thurs. Mar. 11 3:30–4:00 or 5:00–5:30



Five-Day Study Plan

Wed. Feb. 25 or April 21 12:30–1:00 or 1:30–2:00
Thurs. Feb. 26 or April 22 3:30–4:00 or 5:00–5:30

Call 898-5989 to sign up for any of these events.

Pinnacle Award of Achievement

One Pinnacle member graduating in May will be the recipient of the Pinnacle Award of Achievement. Sherry Scott and Marcee Burnett received these awards last May.

We seek to honor those who have achieved academic success despite many obstacles that they encountered and overcame during their academic careers. **Apply for this award in KUC 320 or online at <http://www.mtsu.edu/~owls/pinn.htm>.**

Join the Pinnacle Honor Society

If you are a junior or senior with a 3.0 GPA, you are eligible for membership in Pinnacle, the honor society for nontraditional students. Graduate students with a 3.4 GPA may also join.

You should have received an e-mail invitation to join. The deadline for applying is April 15. **You may apply online at <http://www.mtsu.edu/~owls/pinn.htm>.** Call us at 898-5989 if you have questions.

Nominations Sought for OWLs Awards

At the end of each spring semester during our annual picnic, the OWLs present awards to people who are exemplary in their support and who serve as examples for all OWLs members. This year we ask you to submit nominations for the various categories to the Adult Services Center by April 15 .

The Best OWL Professor Award goes to someone who has demonstrated interest in and concern for adult learners that goes beyond the norm. All nominees receive a certificate of nomination and a letter is sent to their department chairs. The winner also receives an OWL trophy as a permanent reminder of the award.

Other awards go to those who support adult learners in other ways: **Best OWL Spouse, Best OWL Son or Daughter, Best OWL Family, and Best OWL Friend.**

A final group of awards are for adult learners who demonstrate extraordinary abilities to live their lives while doing college work. The **Best Juggling OWL Award** goes to the student who is juggling the most—job, family, school, community activities, etc.—and still able to keep a minimum 2.7 GPA!

The **Best OWL Volunteer Award** goes to the person who serves others in the community or at MTSU while still maintaining a job, family, and college presence.

Be sure to submit your nominations for these awards by the April 15 deadline!

OWLS' Outlook – Spring 2004



I-000-K WHAT'S INSIDE ...

Adult Learning Conference,
Feb. 19–20

Scholarships Awarded

Nominations for OWLs
Awards Requested

Check out our Web site—
www.mtsu.edu/~owls

A Publication of the Adult Services Center
Middle Tennessee State University
P.O. Box 646
Murfreesboro, TN 37132
2-50700

OWLS' Outlook

**MIDDLE
TENNESSEE**
STATE UNIVERSITY