

OWLs' Outlook



Vol. X No. 2

Spring 2005

OWLs Scholarships Deadline Feb. 11

February 11 is the deadline to submit applications for the 14 scholarships distributed by the Older Wiser Learners organization. You can join OWLs and apply for these scholarships online at www.mtsu.edu/~owls.

The OWLs at MTSU have ten Academic Service Scholarships that provide \$1,500 per semester and require five hours per week of work on campus, normally in an office associated with your major. These scholarships are renewable for up to six semesters, provided you maintain a 2.5 semester GPA and a 2.9 cumulative GPA each semester. You must be enrolled full-time (12 hours) while you are receiving this scholarship.

You must be a U.S. citizen seeking your first undergraduate degree. You must have already completed 9 hours of courses at MTSU and currently have a 2.9 GPA or better. You must also be a member of the OWLs organization to apply for one of these scholarships.

Other scholarships available through OWLs include two OWLs Enrichment Scholarships that provide \$1,000 per semester (one year only) for students with GPAs between 2.5 and 2.89. The Jane Nickell Taylor Scholarship provides \$500 per semester for the senior year of a nontraditional female student undergoing life changes, and the Joan Nickell Bailey Scholarship provides \$500 per semester for the senior year of an elementary education major. Both of these privately funded scholarships require a 2.9 GPA.

Learning Styles Focus of Adult Learning Conference February 24–25

Participants in the twelfth annual Adult Learning Conference may gain new insights into their learning styles. The event will begin in the JUB Hazlewood Dining Room at noon on Thursday, February 24, and end at 11:30 a.m. Friday, February 25. Some MTSU adult students may enroll thanks to Student Activity Fee Funds. Those interested in participating should contact the Adult Services Center at (615) 898-5989 by February 11.

Keynote speakers Dee Doochin, a professional certified coach, and Holly Hamilton, a master certified coach, are trained AD/HD coaches who have developed a new learning modalities inventory. They will introduce this instrument and give participants the chance to take the inventory and discover their own learning styles. Breakout sessions will focus on ways students can use this knowledge to improve their study skills. Sessions for faculty members and professionals who work with adult learners will focus on how to make presentations meet the needs of students with various learning styles.

Thursday, February 24

- Noon–2:00 p.m.** Keynote Luncheon
2:15–3:15 p.m. Taking the Inventory and Learning About It
3:30–4:30 p.m. Dee Doochin and Holly Hamilton: Putting the Inventory to Work for You (students)
Meredith Higgs: "Easy Bake Oven" Learning Styles Instruction (faculty and professionals)

Friday, February 25

- 8:00–9:00 a.m.** Linda Clark and Fran Henslee: Using Brain-based Study Methods (students)
Dee Doochin and Holly Hamilton: Putting the Inventory to Work When You Teach (faculty and professionals)
9:15–10:15 a.m. Christy Farr Ferrelli: A Student's Experience Putting Learning Styles to Work (students)
Pat Wurth: Project-based Learning for Adult Learners (faculty and professionals)
10:30–11:30 a.m. Concluding Brunch. Closing remarks by Dee Doochin and Holly Hamilton

Deadline to sign up for this conference is February 11.

Dr. Carol Ann Baily, Director

OWLs Activities

April 8

Nominations for OWLs Awards due

The OWLs organization gives out awards each spring semester to the Best OWL Professor, the Best OWL Spouse, the Best OWL Son or Daughter, the Best OWL Family, and the Best OWL Friend. We also present an award to the Best Juggling OWL and the Best OWL Volunteer. You may pick up a nomination form in the Adult Services Center in KUC 320 or use the online form available at www.mtsu.edu/~owls/owlnom.htm.



April 8

Deadline to join the Pinnacle Honor Society

All juniors and above with a 3.0 GPA or graduate students with 3.4 GPA are eligible to join. Fill out an application online at www.mtsu.edu/~owls and then click on Pinnacle in the list on the left, or come by KUC 320 to pick up an application.



May 5

Annual OWLs Picnic

5:30–7:30 p.m.

Old Fort Park Pavilion



This is a fun time for family and friends. We have a potluck picnic in the park to close out the school year! Bring a dish to serve 8–10: salad, veggies, or side dishes to go with barbeque, plus a liter bottle of your favorite soft drink. We provide the barbeque and all the paper products we need. We give out the OWLs awards and have the Pinnacle Honor Society initiation at this event.

President's Perspective

I want to share with you some exciting news. I have been accepted into the MTSU McNair Scholars Program! Several OWLs members are already McNair Scholars, but many of you may not know about this wonderful program. Let me tell you more about it.

McNair Scholars prepares financially disadvantaged, first-generation, or underrepresented college students for graduate school and grooms them to pursue and complete a doctoral degree. McNair Scholars attend weekly seminars each semester for which they receive one hour of credit and learn valuable lessons and get practical advice about graduate school from guest speakers. They also get GRE tutoring. When it is time to take the GRE, they are given vouchers to cover the cost of the test.

They earn a \$2,600 stipend for doing a summer research internship. For most MTSU McNair Scholars, the research itself becomes the most important benefit. Those who are chosen as McNair Scholars get opportunities that most undergraduates do not have. The research in which they participate prepares them for research as graduate students. The symposium at which they present their research gives them much needed practice making scholarly presentations while still at the undergraduate level. Some McNair Scholars even get to present their research at professional conferences.

The benefits of being chosen as a McNair Scholar are more than just participating in research internships and presenting at conferences. Perhaps the greatest benefit is the prestige. McNair Scholars are distinguished as achievers and are noticed by graduate schools. If this career path interests you, call the McNair Scholars program at 904-8462 for information.

Calley Stroud, OWLs President



OWLs and the Career and Employment Center offer a new series: **Career Preparation Workshops**

All workshops will be held on Wednesdays from 12:30–1:30 p.m.



Writing Your Resume, February 16

Writing Cover Letters, February 23

Etiquette for Job Hunters, March 2

Job Search Strategies, March 23

Career Transitioning, March 30

Reentry into the Workforce, April 6

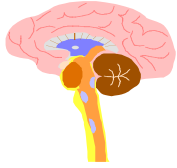
Preparing for the Interview, April 13



Call 898-5989 to sign up for any of these workshops.

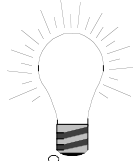


Reach for the Pinnacle Student Success Workshops



Using Your Whole Brain

Tues., Feb. 8 or March 29, 3:00–3:30 p.m.
Thurs., Feb. 10 or March 31, 5:00–5:30 p.m.



Improving Your Memory

Tues., March 15 or April 5, 3:00–3:30 p.m.
Thurs., March 17 or April 7, 5:00–5:30 p.m.



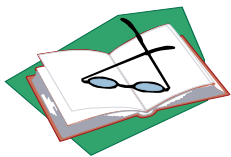
Managing Your Time

Tues., March 22, 3:00–3:30 p.m.
Thurs., March 24, 5:00–5:30 p.m.



Five Steps to a College Paper

Tues., March 29, 3:00–3:30 p.m.
Thurs., March 31, 5:00–5:30 p.m.



Five-Day Study Plan

Tues., Feb. 15 or April 12, 3:00–3:30 p.m.
Thurs., Feb. 17 or April 14, 5:00–5:30 p.m.

Call 898-5989 to sign up for any of these events.

Join the Pinnacle Honor Society

If you are a junior or senior with a 3.0 GPA, you are eligible for membership in Pinnacle, the honor society for nontraditional students. Graduate students with 3.4 GPAs may also join.

You may have received an e-mail invitation to join Pinnacle. The deadline for applying is April 8. You may apply online at www.mtsu.edu/~owls/pinn.htm. Call us at 898-5989 if you have questions.

Pinnacle Cords and Award

Graduating Pinnacle members may purchase a blue and silver Pinnacle cord to wear at graduation. They cost just \$10.

Each May, we seek to honor a Pinnacle member who has achieved academic success despite obstacles encountered and overcome during an academic career. If you are graduating this spring as a Pinnacle member, you may apply for this award by April 8 in KUC 320 or online at www.mtsu.edu/~owls/pinn.htm.

Nominations Sought for OWLs Awards

At the end of each spring semester during our annual picnic, the OWLs present awards to persons who are exemplary in their support and are good examples for all OWLs members. This year we are asking for nominations for the various categories to be sent to the Adult Services Center by April 8.

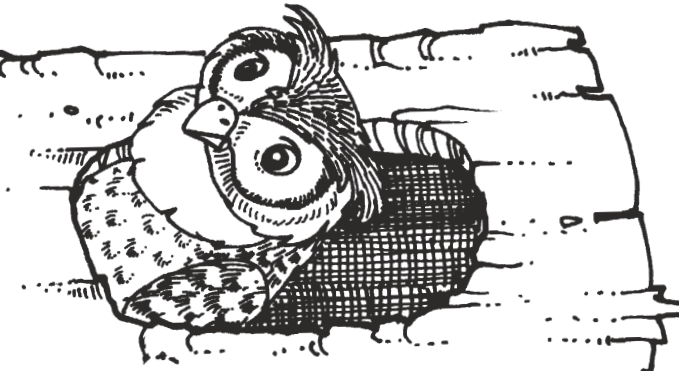
The Best OWL Professor Award goes to someone who has demonstrated interest in and concern for adult learners that goes beyond the norm. All nominees receive a certificate of nomination and a letter is sent to their department chairs. The winner receives an OWLs trophy as a permanent reminder of the honor.

Other awards go to those who support adult learners in other ways. These awards go to **the Best OWL Spouse, the Best OWL Son or Daughter, the Best OWL Family, and the Best OWL Friend.**

Other awards are presented to adult learners who demonstrate extraordinary abilities to live their busy lives while attending college at the same time. **The Best Juggling OWL Award** goes to the student who is juggling the most—job, family, school, community activities, etc.—and who is still able to maintain a minimum 2.7 GPA! **The Best OWL Volunteer Award** goes to a student who serves others in the community or at MTSU while maintaining a job, fulfilling family responsibilities, and going to college.

Submit nominations for these awards by April 8!

OWLS Outlook – Spring 2005



L-000-K WHAT'S INSIDE ...

Adult Learning
Conference, Feb. 24-25

Scholarship Applications
Due February 11

OWLS Awards

Nominations Due April 8

Check out our Web site:
www.mtsu.edu/~owls



OWLS' Outlook

A Publication of the Adult Services Center
Middle Tennessee State University

P.O. Box 646
Murfreesboro, TN 37132

2-50700

SA053-0205
A Tennessee Board of Regents University
MTSU is an equal opportunity, non-racially identifiable, educational
institution that does not discriminate against individuals with disabilities.